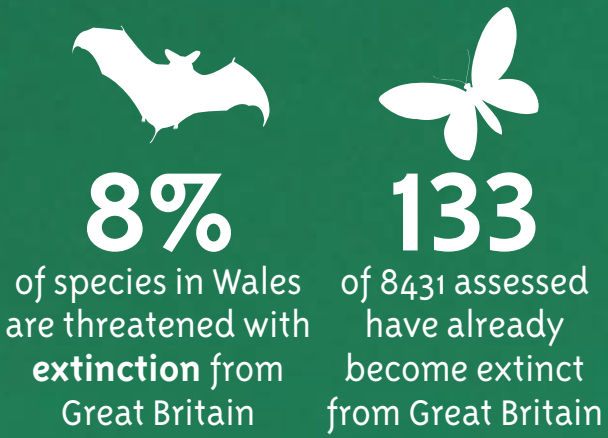
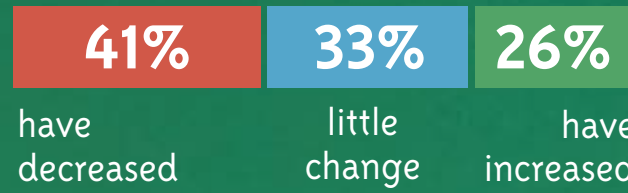


**BIODIVERSITY IN WALES IS DECLINING. SINCE 1970 THERE IS LESS WILDLIFE AND IN FEWER PLACES.**



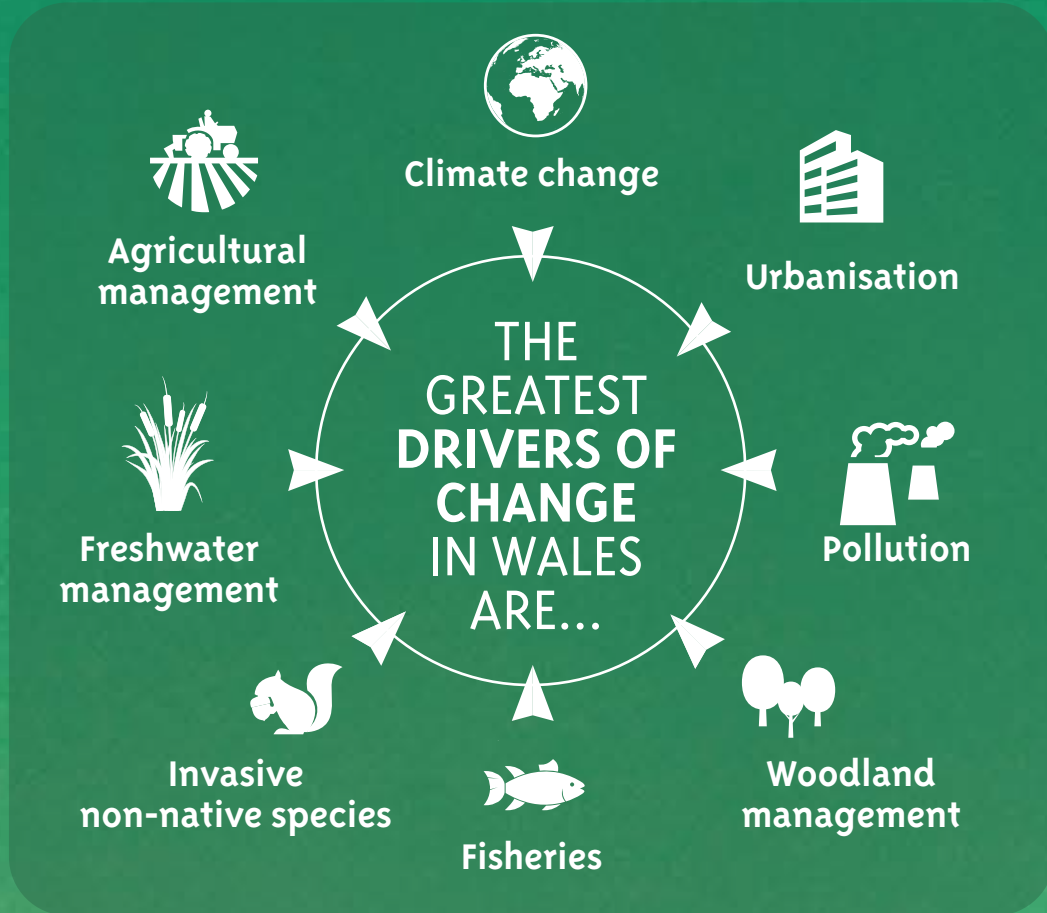
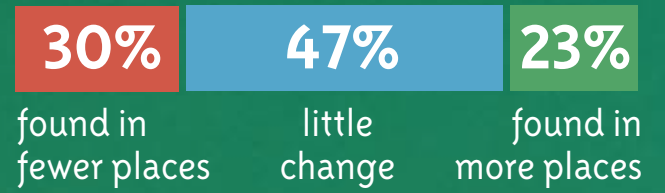
**SINCE 1970 IN THE UK...**

More species in the UK have seen their **populations decrease** than increase:

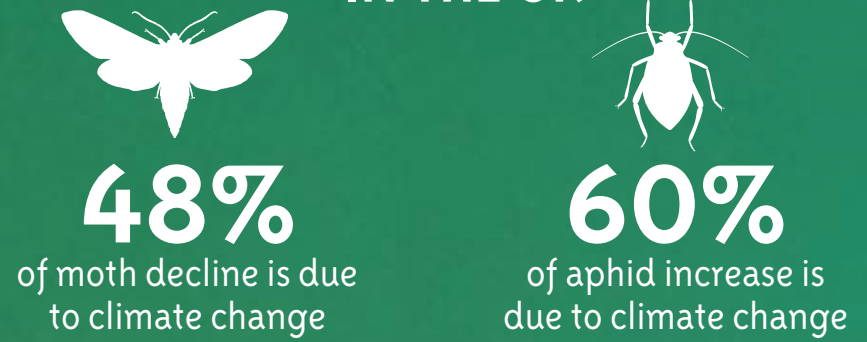


**IN WALES...**

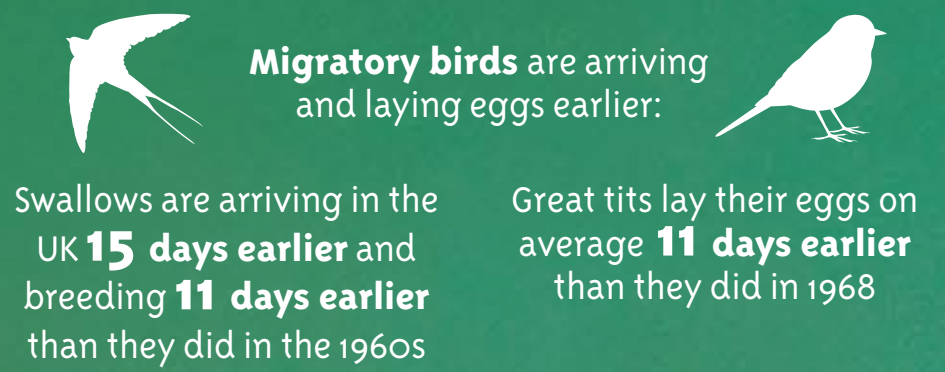
We have seen big changes in where wildlife is found:



**CLIMATE CHANGE IS HAVING AN INCREASING IMPACT ON NATURE IN THE UK**



The kittiwake population of Wales has declined by **35%** since 1986. Across the UK climate change has reduced the availability of sandeels, a key food source



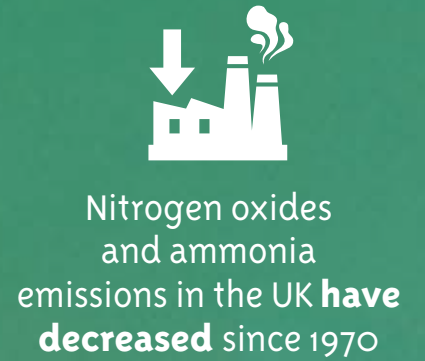
**CHANGING AGRICULTURAL MANAGEMENT HAS HAD THE BIGGEST SINGLE IMPACT UPON NATURE IN THE UK OVER RECENT DECADES**



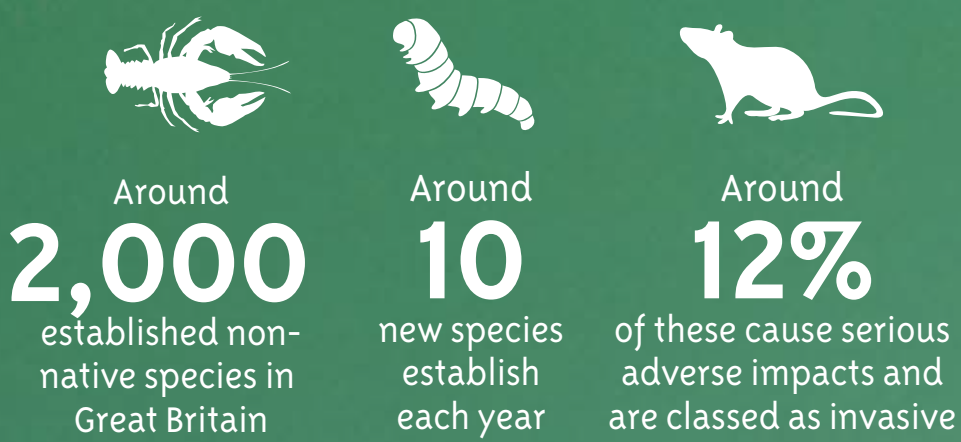
**URBANISATION**



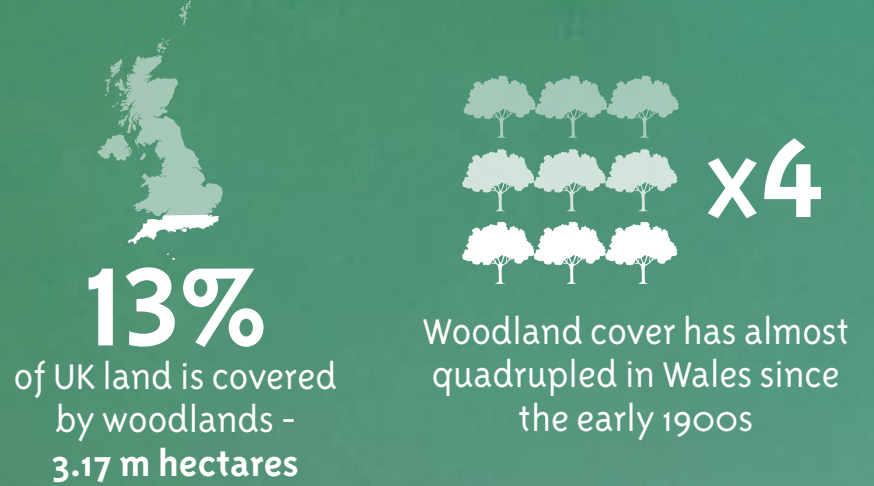
**POLLUTION**



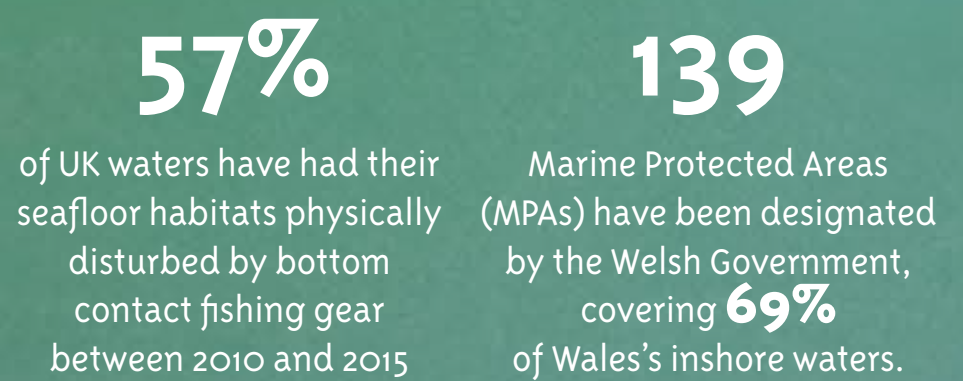
**INVASIVE NON-NATIVE SPECIES**



**WOODLAND MANAGEMENT**



**FISHERIES**



**PUBLIC SUPPORT FOR CONSERVATION IN THE UK CONTINUES TO GROW**



**However**, public sector expenditure on biodiversity in the UK, as a proportion of GDP, has **fallen by 42%** since a peak in 2008/9